

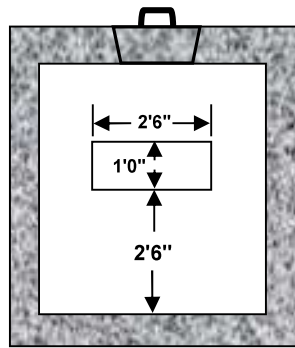
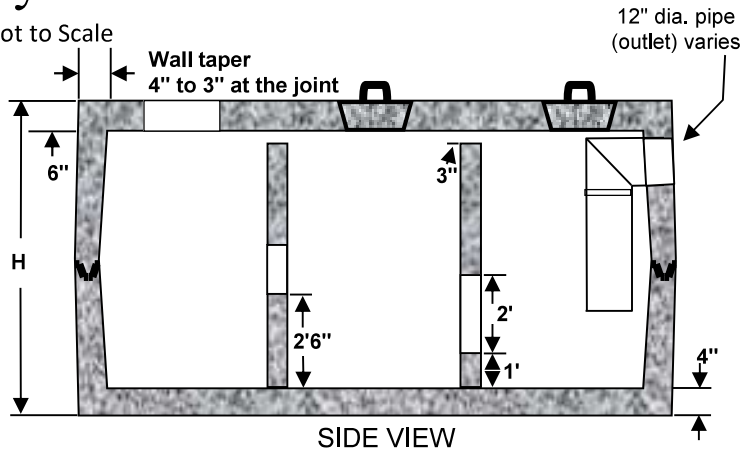
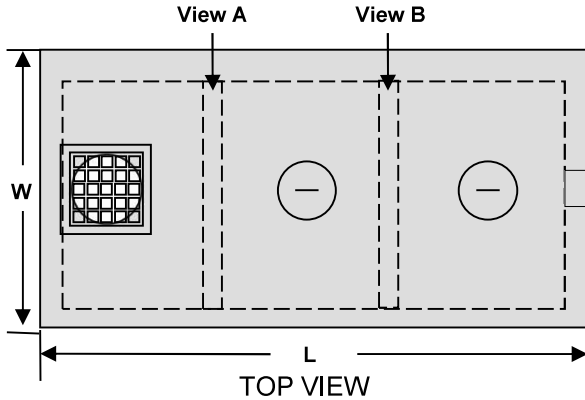
William N. Lamarre Concrete Products, Inc.

SOS / WQT HD TOP LOADING

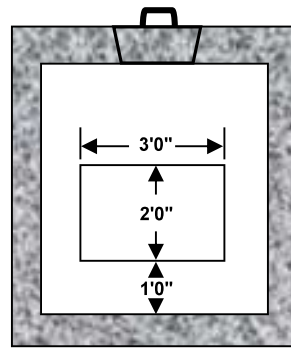
Specialty Tank

Item is made to order.
this is an example.
Holes & pipe may vary.

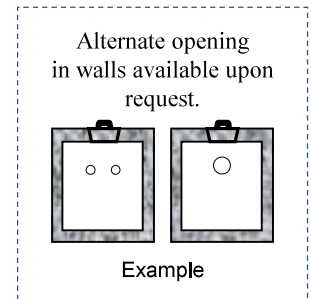
Drawing Not to Scale



View A



View B



Critical Tank Dimensions

Liquid Capacity	Inlet / Outlet	Height HD	L x W	Excavation Size
1500	Varies	70"	10'6" x 5'6"	12' x 7'
2000	Varies	69½"	12' x 6'6"	13' x 8'
2500	Varies	84½"	12' x 6'6"	13' x 8'
3000	Varies	99½"	12' x 6'6"	13' x 8'

Notes

1. Concrete strength f'c 4000PSI@28 days. Density 150 PCF.
2. Cement, Portland Type II or III, ASTM C150-81
3. Admixtures, air & plasticizers per ASTM C233-82
4. Reinforcement per ASTM C1227-latest revision
5. Heavy-duty top loading available – add 2" to height
6. Constructions joints sealed with butyl rubber
7. Design conforms to 310 CMR 15.00, Mass Title V regs. for septic tanks