

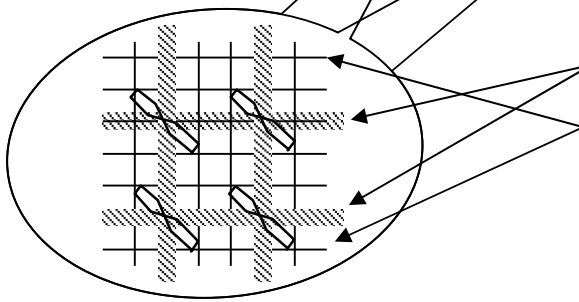
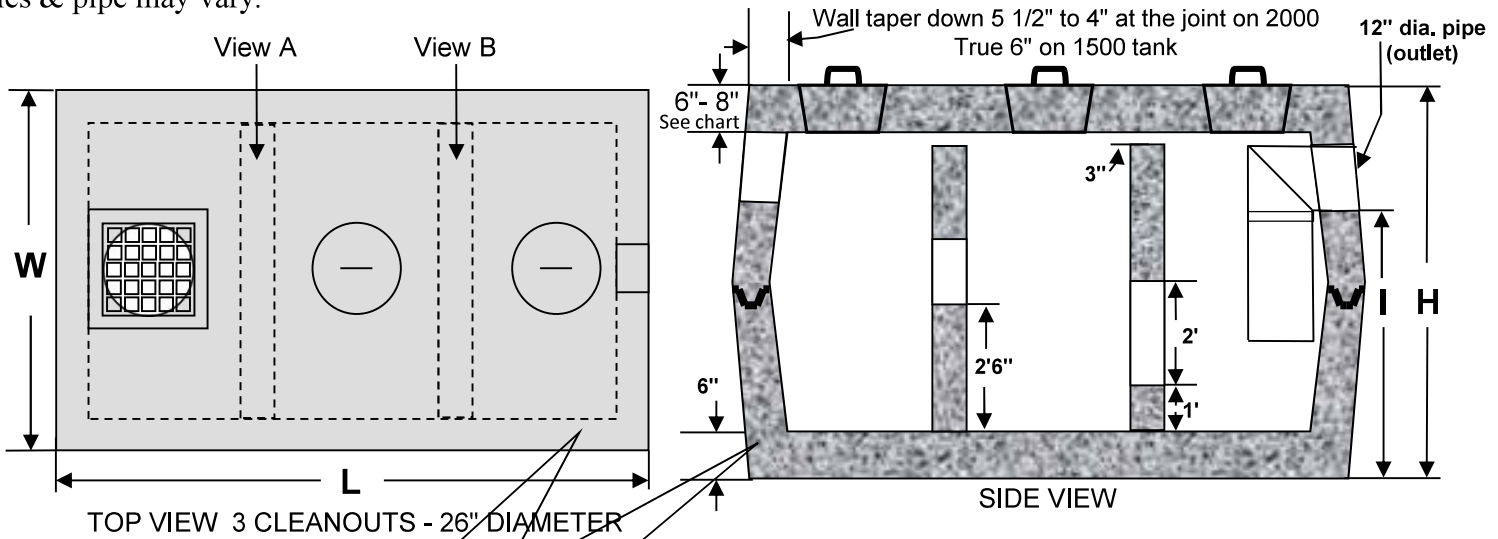
William N. Lamarre Concrete Products, Inc.

OWS / SOS / WQT COMMERCIAL

3-Comp Specialty Tank

Drawing Not to Scale

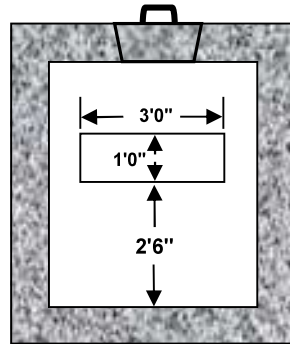
Item is made to order.
this is an example.
Holes & pipe may vary.



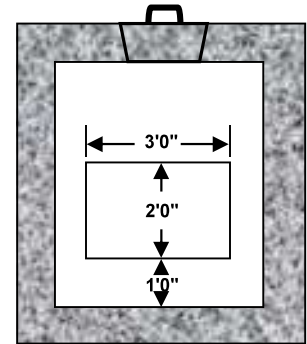
Detail of Reinforcement

1/2" grade 60 rebar tied in a 8" x 8" grid, top and bottom, 1/2 grade 60 rebar loops around sides every 8" inches

4" x 4" #4 wire fabric, top sides and bottom or equivalent



View A



View B

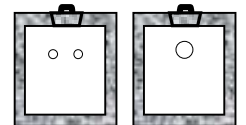
Critical Tank Dimensions

Liquid Capacity	Top Thickness	Inlet / Outlet	Height	L x W	Excavation Size
1500	8"	varies	76"	11' x 6'2"	13' x 8'
2000	6"	varies	74"	12'2" x 6'8"	14' x 9'

Notes

- Also available as a 2 compartment tank. (Placement varies as needed)
- Concrete strength f'c 5000PSI@28 days. Density 150 PCF.
- Cement, Portland Type II or III, ASTM C150-81
- Admixtures, air & plasticizers per ASTM C233-82
- Reinforcement per ASTM C1227-latest revision
- Design Loading AASHTO HS20-40
- Constructions joints sealed with butyl rubber
- Design conforms to 310 CMR 15.00, Mass Title V regs. for septic tanks

Alternate opening in walls available upon request.



Example