

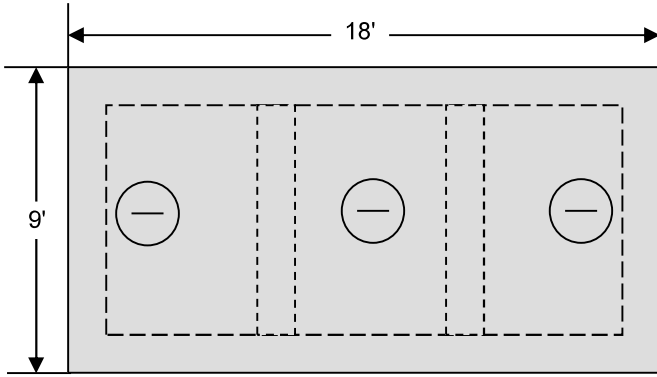
William N. Lamarre Concrete Products, Inc.

H2O COMMERCIAL PRECAST TANK 2-COMP.

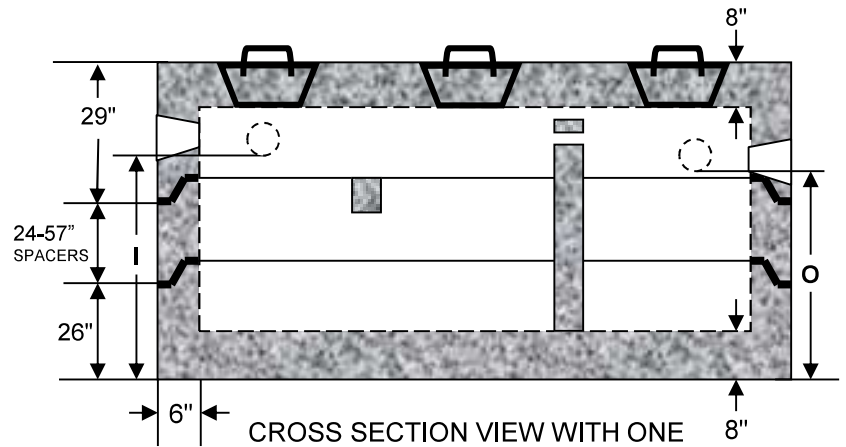
4,000 – 11,000 Gallon Capacity

Drawing Not to Scale

NEW MOLD
2024



TOP VIEW-TOP
3 CLEANOUTS - 26" DIAMETER



CROSS SECTION VIEW WITH ONE
SPACER CROSSMEMBERS-risers only

Critical Tank Dimensions				
Liquid Capacity	Inlet / Outlet	Height	Septic Capacity	Holding Capacity
4000	62"/59"	79"	4322	5339
4500	68"/65"	85"	4822	5839
5000	71"/68"	91"	5339	6356
5500	77"/74"	97"	5839	6856
6000	83"/80"	103"	6356	7373
6500	89"/86"	109"	6856	7873
7000	95"/92"	115"	7373	8390
7500	101"/98"	121"	7873	8890
8000	107"/104"	127"	8390	9407
8500	113"/110"	133"	8890	9907
9000	116"/113	136"	9153	10,170
9500	122"/119"	142"	9653	10,670
10000	128"/125"	148"	10,170	11,187
11000	140"/137"	160"	11,187	12,204

Notes

1. Also available as a 2 compartment tank. (Placement varies as needed-shown 1/3-2/3)
2. Concrete strength f'c 5000PSI@28 days. Density 150 PCF.
3. Cement, Portland Type II or III, ASTM C150-81
4. Admixtures, air & plasticizers per ASTM C233-82
5. Reinforcement per ASTM C1227-latest revision
6. Design Loading AASHTO HS20-40
7. Construction joints sealed with butyl rubber
8. Design conforms to 310 CMR 15.00, Mass Title V regs. for septic tanks