

Informational Sheet On All Distribution Boxes

(Drawings Not to Scale)

Distribution Box

1. Small Box - 5 outlet

2. Medium Boxes

- H10 5 Outlet (cover either H10 or H20)
- H20 6 Outlet Westford
- H10 6 Outlet Light Duty

3. Large Boxes

- H10 8 Outlet/3 Inlet or 10 Outlet/1 Inlet (cover H10 or H20)
- H20 8 Outlet/3 Inlet or 10 Outlet/1 Inlet
- H20 9 or 11 Outlet (Lincoln)
- H20 15 Outlet
- H20 23 Outlet

4. Notes:

- Concrete strength f'c 4000PSI@28 days. Density 150 PCF.
- Cement, Portland Type II or III, ASTM C150-81
- Admixtures, air & plasticizers per ASTM C233-82
- All Distribution Boxes also manufactured with 1.5" fiber reinforcement for additional strength.
- Design Loading for H20 Boxes in accordance with AASHTO HS20-40
- All but the small 5 outlet box, designs conforms to 310 CMR 15.00, Mass Title V regs. for septic tanks

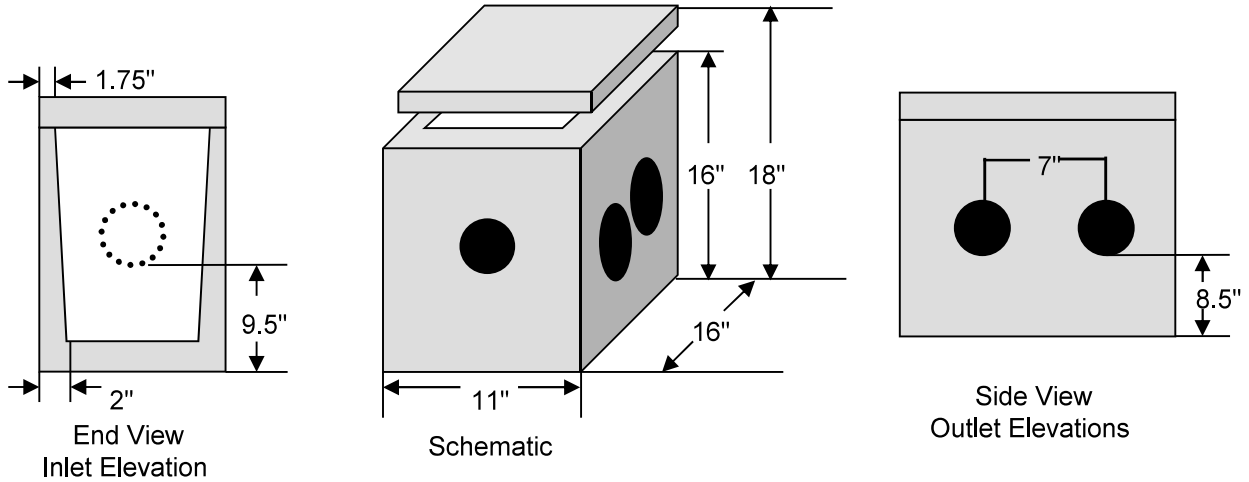
William N. Lamarre Concrete Products, Inc.

SMALL DISTRIBUTION BOX

5 OUTLET DISTRIBUTION BOX

DOES NOT MEET TITLE V – NH ONLY

Drawing Not to Scale



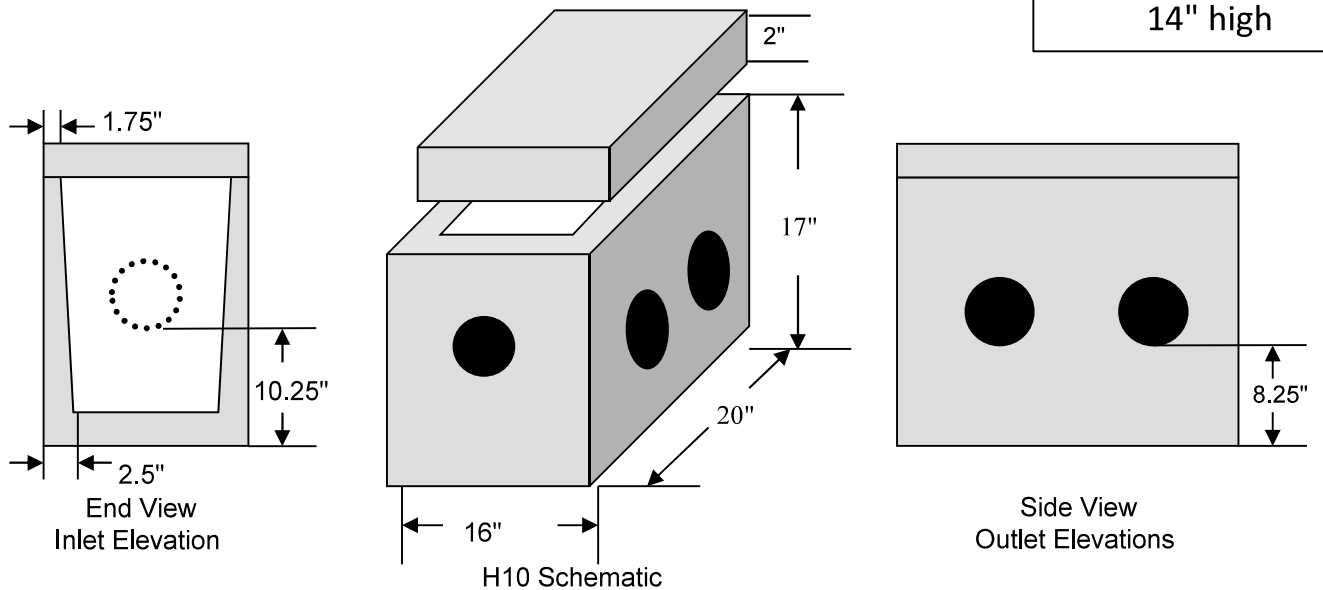
MEDIUM DISTRIBUTION BOX

5 OUTLET DISTRIBUTION BOX

Drawing Not to Scale

RISERS AVAILABLE:

4" high
14" high

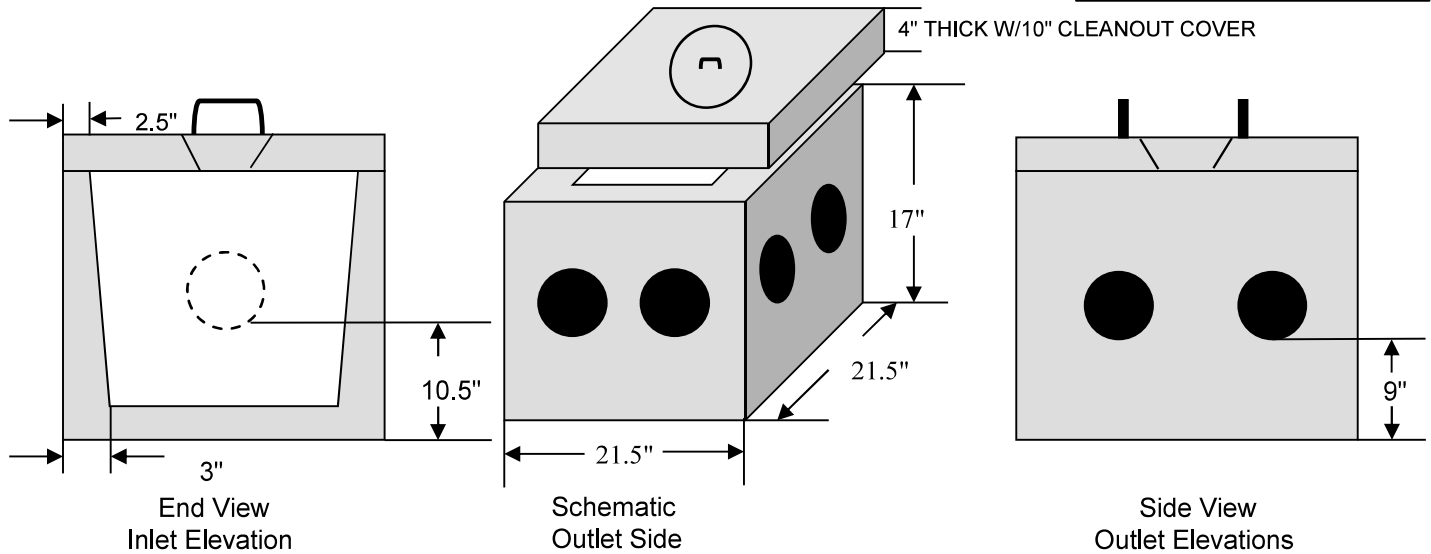


**For Additional Information See:
Informational Sheet On All Distribution Boxes**

William N. Lamarre Concrete Products, Inc. 6 OUTLET H20 DISTRIBUTION BOX

Drawing Not to Scale

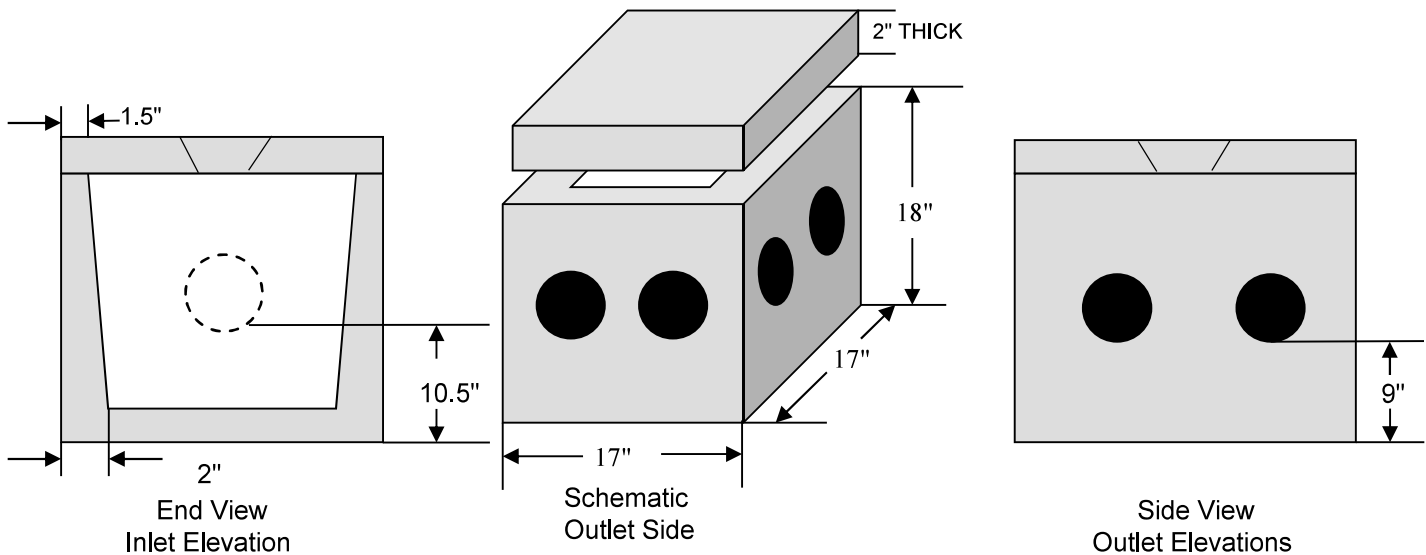
RISER AVAILABLE:
14" high



6 OUTLET H10 Light Duty DISTRIBUTION BOX

Drawing Not to Scale

RISER AVAILABLE:
14" high



**For Additional Information See:
Informational Sheet On All Distribution Boxes**

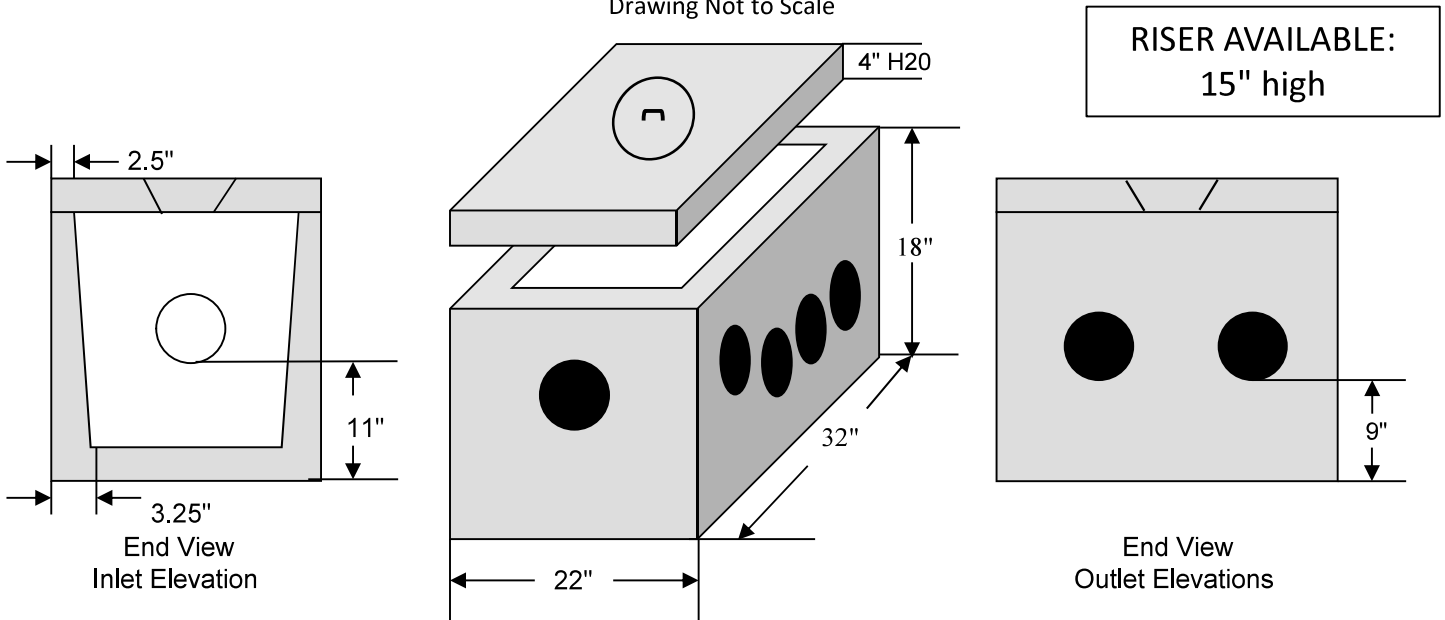
William N. Lamarre Concrete Products, Inc.

THIS BOX HAS 2 LAYOUTS FOR INLET/OUTLET

8 & 10 OUTLET DISTRIBUTION BOXES

H20 – 8 OUTLET/3 INLET SHOWN

Drawing Not to Scale

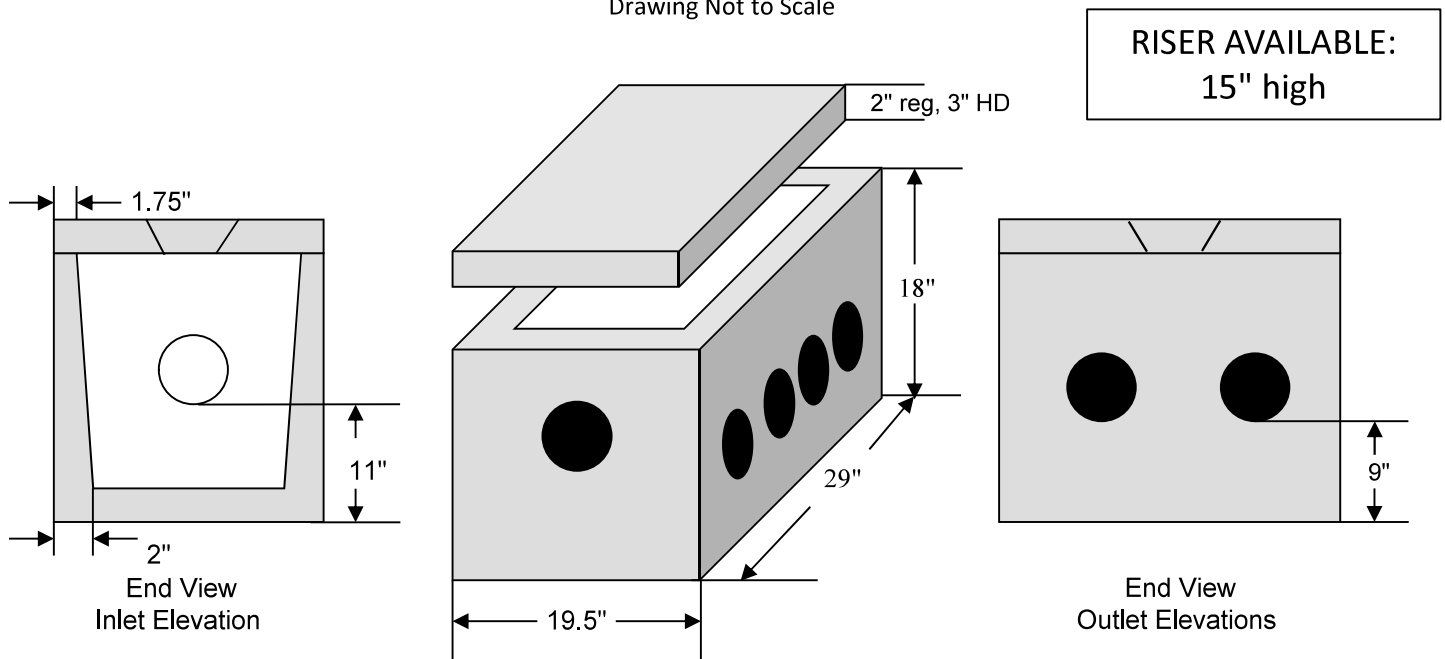


H10 Schematic: H10 cover 2", HD COVER 3", H20 cover 4"

8 & 10 OUTLET DISTRIBUTION BOXES

H10 – 10 OUTLET/1 INLET SHOWN

Drawing Not to Scale



H10 Schematic: H10 cover 2", HD COVER 3" w/cleanout, H20 cover 4" w/cleanout

**For Additional Information See:
Informational Sheet On All Distribution Boxes**

87 Adams Hill Road, PO Box #333 Greenville, NH 03048
603-878-1340

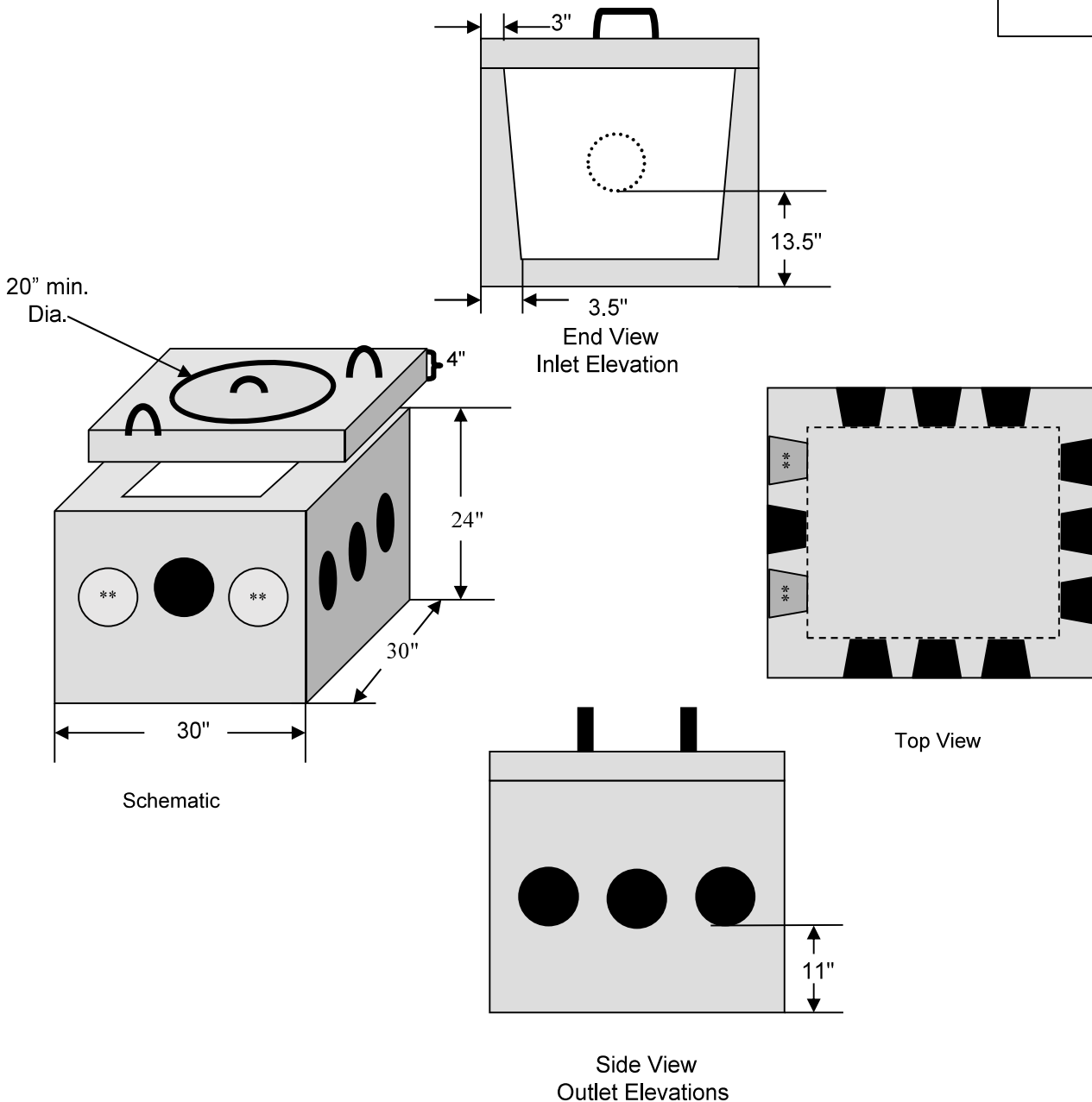
William N. Lamarre Concrete Products, Inc. 9 or 11 OUTLET H2O DISTRIBUTION BOX

LINCOLN

(**2 Additional Outlets on Inlet Side w/9 Outlet)

Drawing Not to Scale

RISER AVAILABLE:
20" high



**For Additional Information See:
Informational Sheet On All Distribution Boxes**

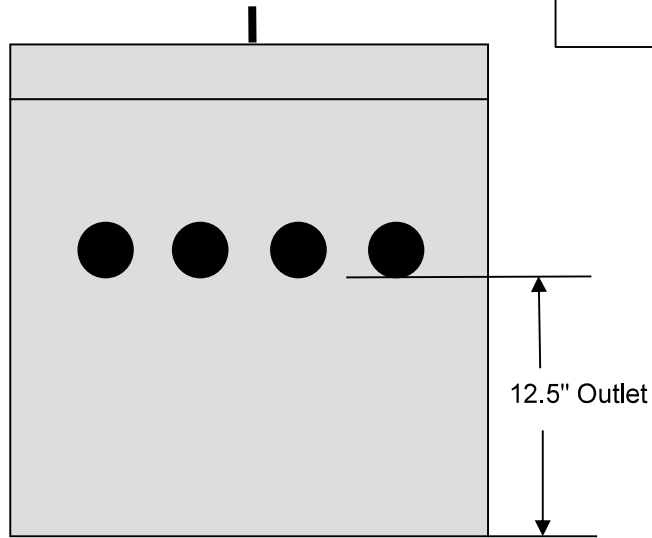
87 Adams Hill Road, PO Box #333 Greenville, NH 03048
603-878-1340

William N. Lamarre Concrete Products, Inc. 3' x 3' H2O DISTRIBUTION BOX

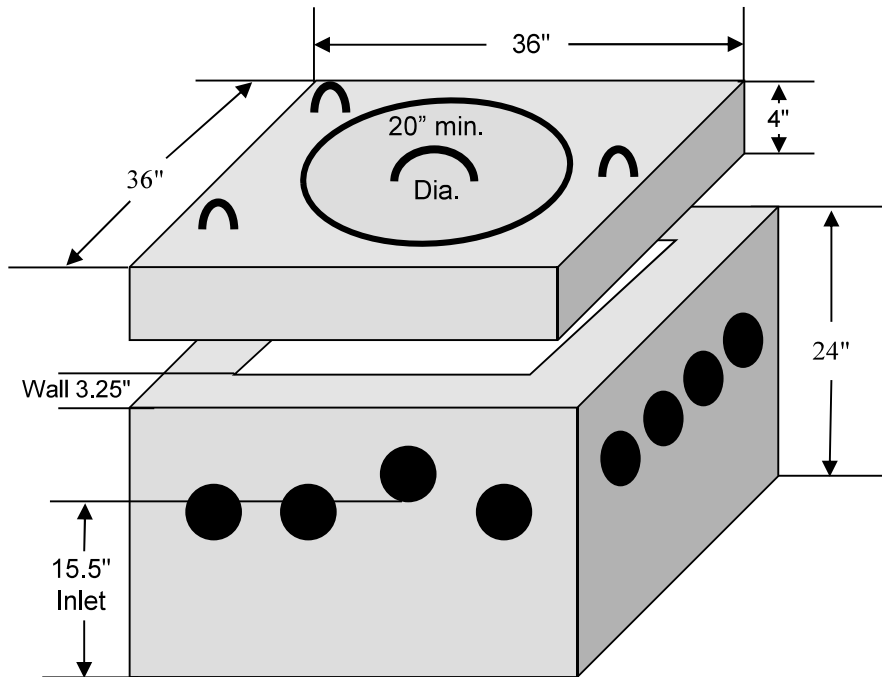
15 Outlet / 1 Inlet

Drawing Not to Scale

RISER AVAILABLE:
20" high



Side View
Outlet Elevations



End View - Inlet Elevation

**For Additional Information See:
Informational Sheet On All Distribution Boxes**

87 Adams Hill Road, PO Box #333 Greenville, NH 03048
603-878-1340

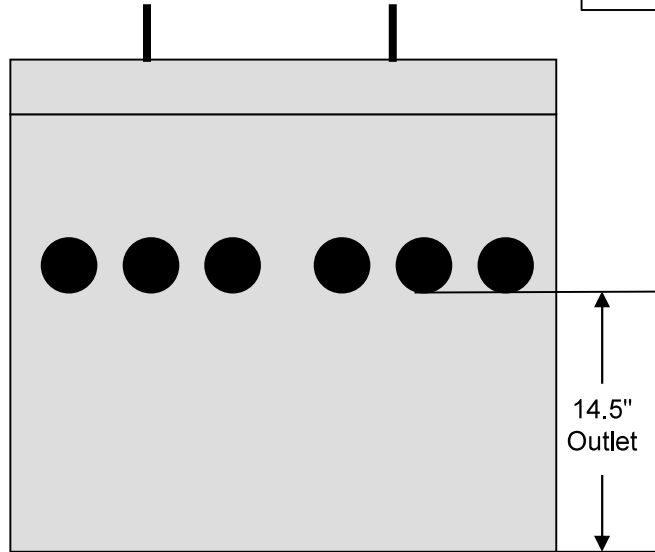
William N. Lamarre Concrete Products, Inc. 4' x 4' H2O DISTRIBUTION BOX

23 Outlet / 1 Inlet

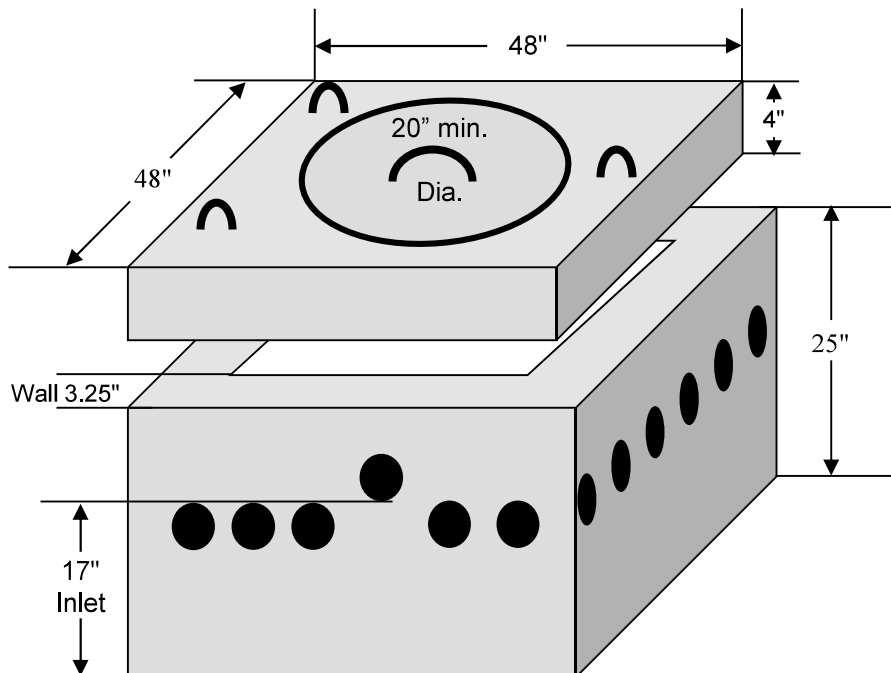
(or 22 Outlet / 2 Inlet)

Drawing Not to Scale

RISER AVAILABLE:
22" high



Side View
Outlet Elevations



End View - Inlet Elevation

**For Additional Information See:
Informational Sheet On All Distribution Boxes**

87 Adams Hill Road, PO Box #333 Greenville, NH 03048
603-878-1340